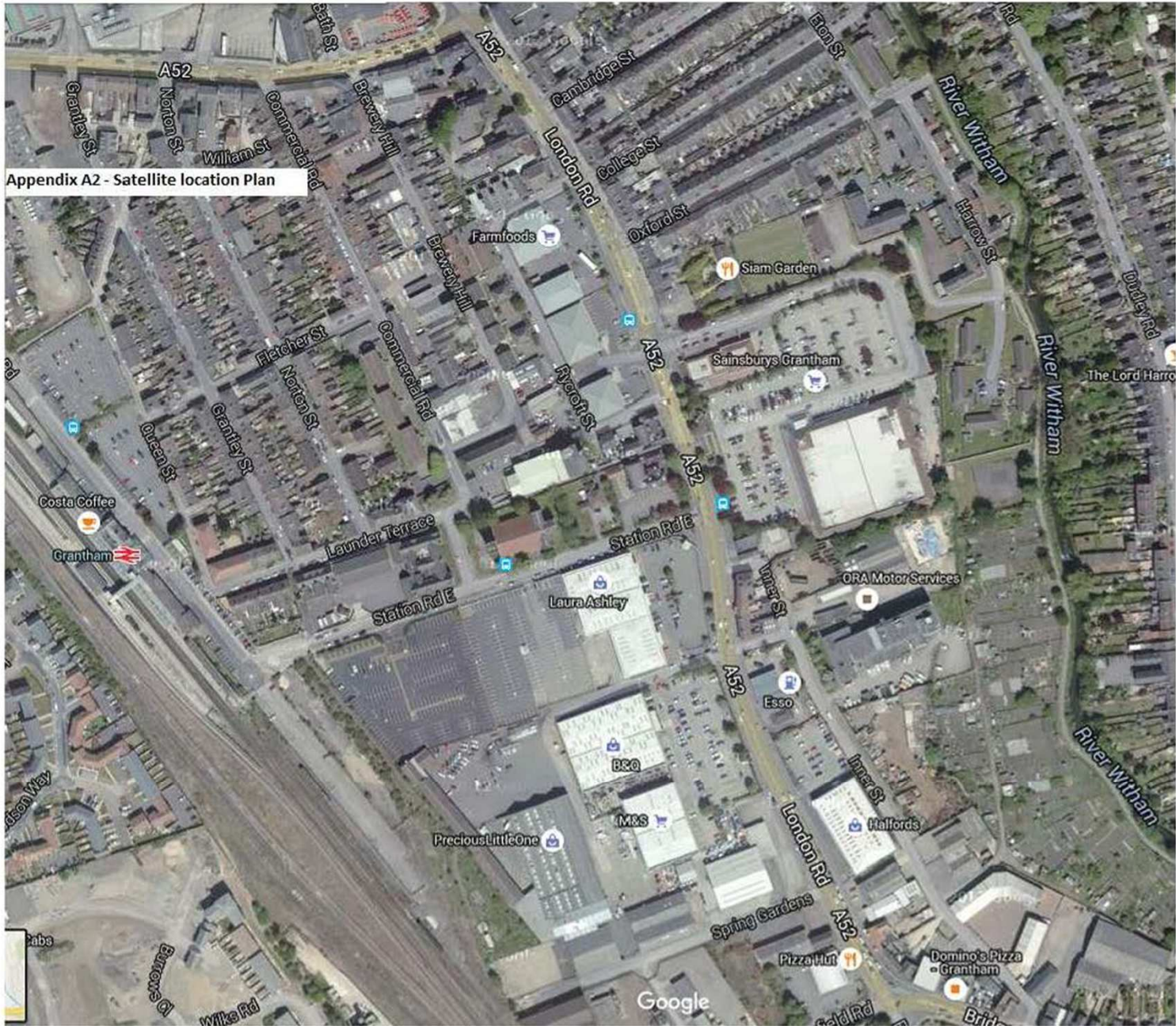
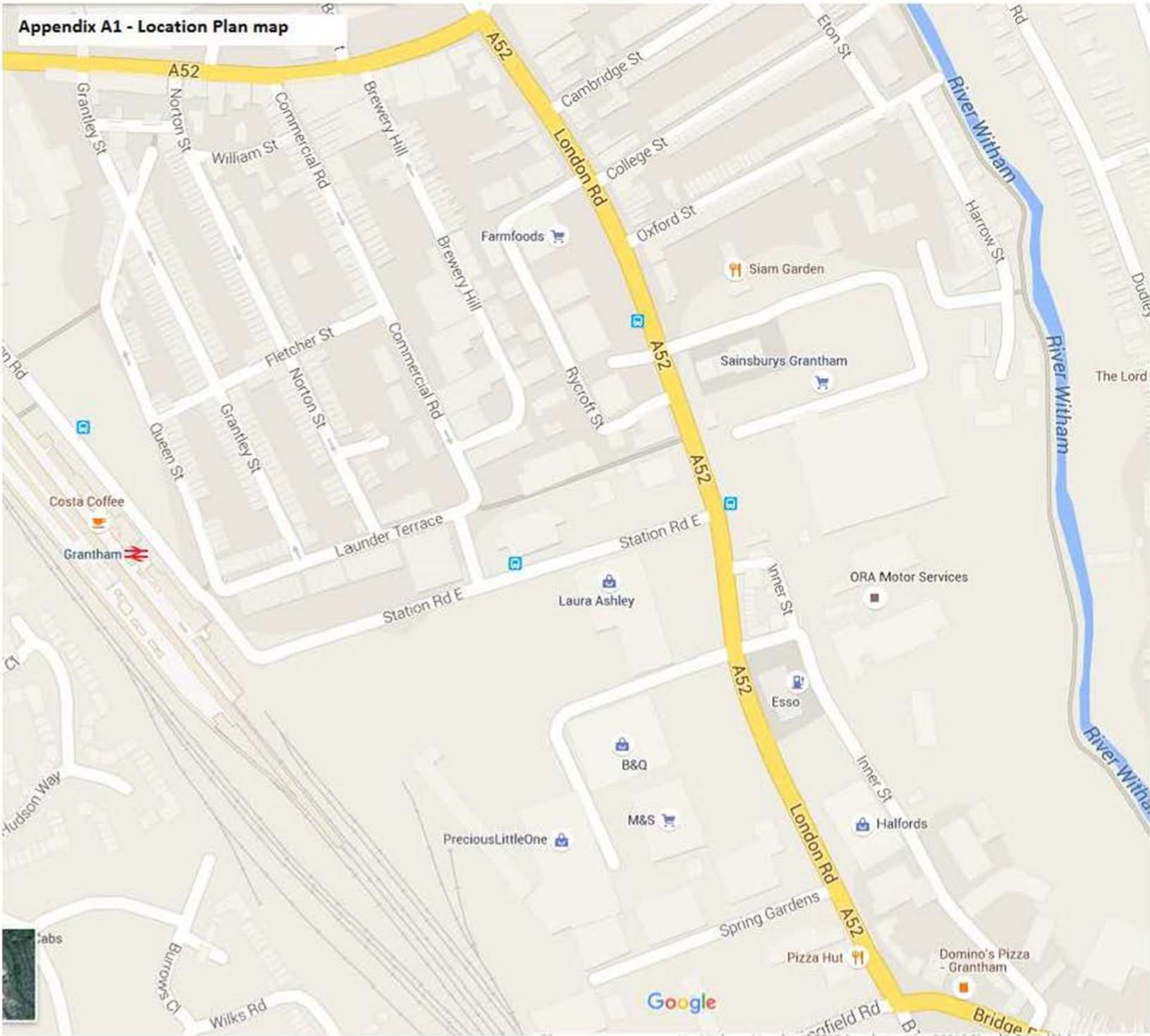
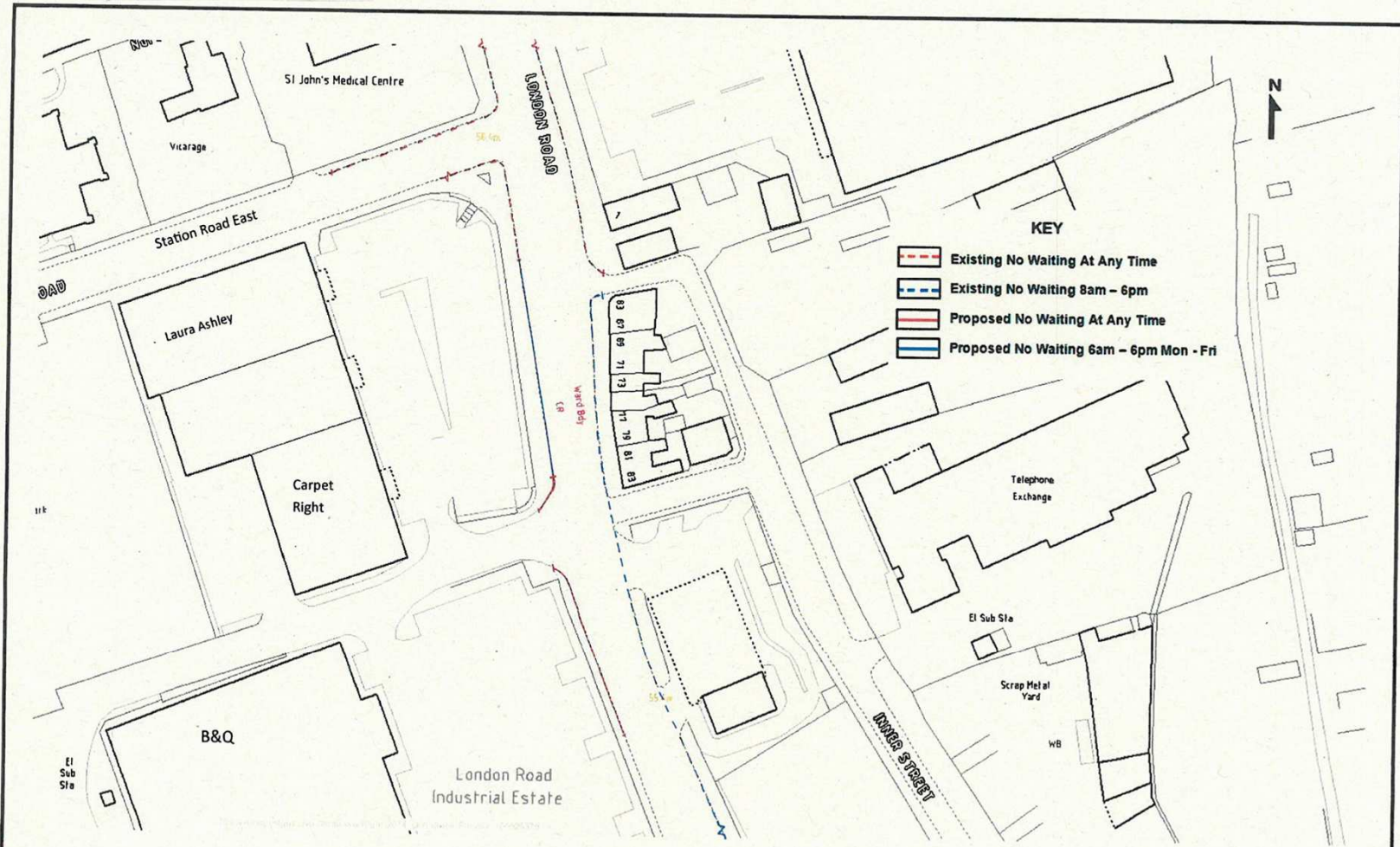


Appendix A2 - Satellite location Plan





Appendix A - Location Plan



<p>Lincolnshire COUNTY COUNCIL</p> <p>"This map is reproduced from Ordinance survey material with the permission of the Controller of Her Majesty's Stationery Office Crown © Copyright. All rights reserved."</p>	<p>ENVIRONMENT & ECONOMY DIRECTORATE</p> <p>NETWORK SOUTH HIGHWAYS</p> <p>DISTRICT COUNCIL OFFICES</p> <p>KESTEVEN STREET</p> <p>SLEAFORD</p> <p>LINCS NG34 7EF</p>	<p>DRAWN BY NW</p>	<p>SHEET No. 1 of 1</p>	<p>DRAWING NUMBER</p> <p>185NW2JUL15</p>
		<p>CHECKED BY MH</p>	<p>REVISION 1 of 1</p>	<p>Proposed Waiting Restrictions</p> <p>Grantham, London Road (A52)</p>
		<p>SCALE 1:1000</p>	<p>DATE 21/07/2015</p>	

Appendix C – London Road Photographs



Photographs 1 & 2 – Looking South: View from a motorist exiting Retail Park: lack of visibility due to parked vehicles.

Appendix C – London Road Photographs



Photograph 3:
Facing North
from Retail Park
entrance.



Photograph 4:
View of western
side of
carriageway